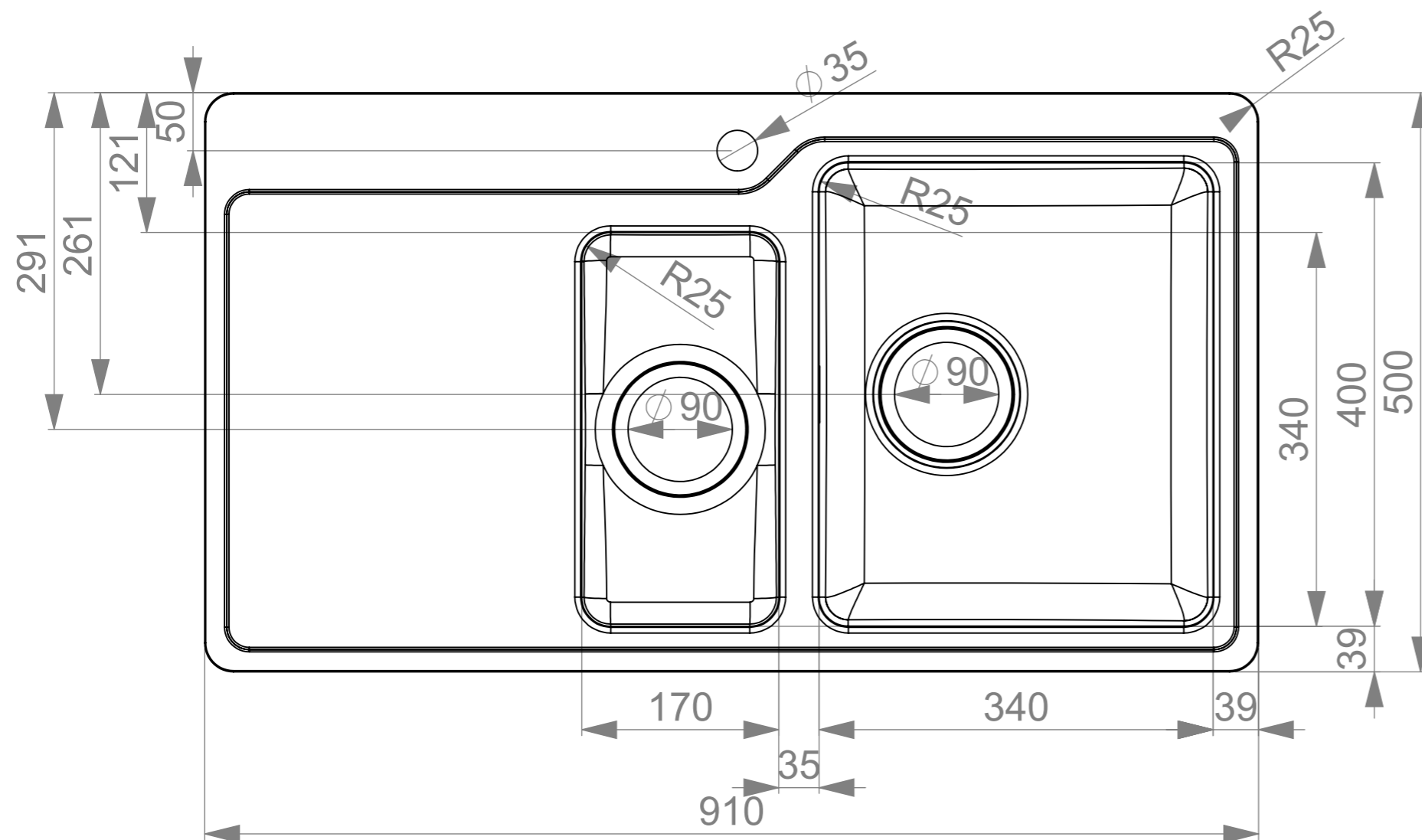
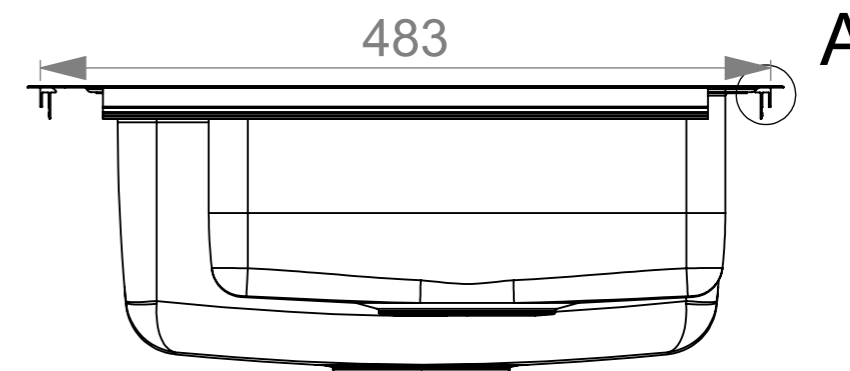
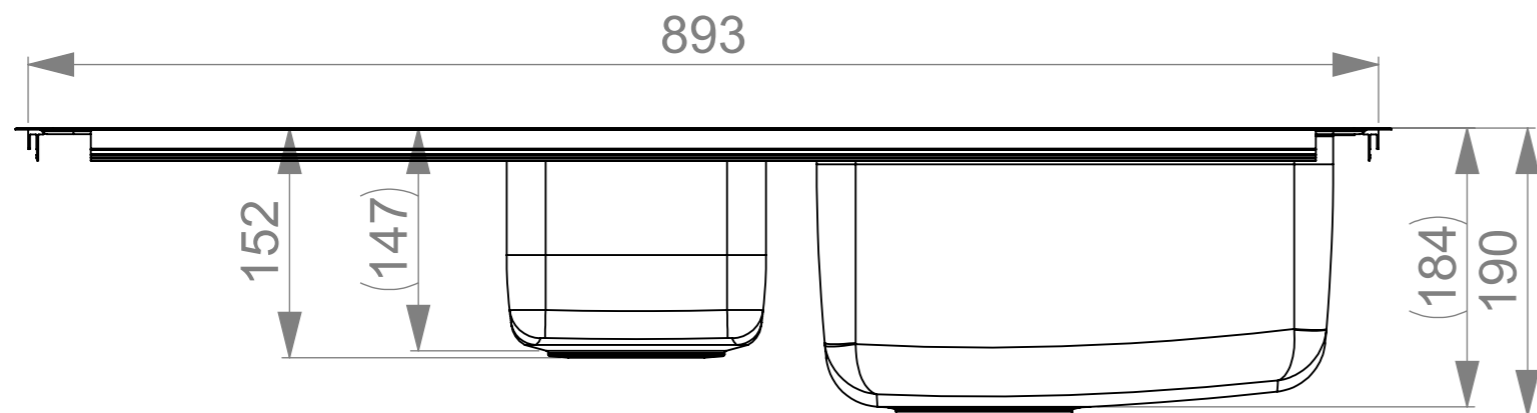


Change description
Siphon updated

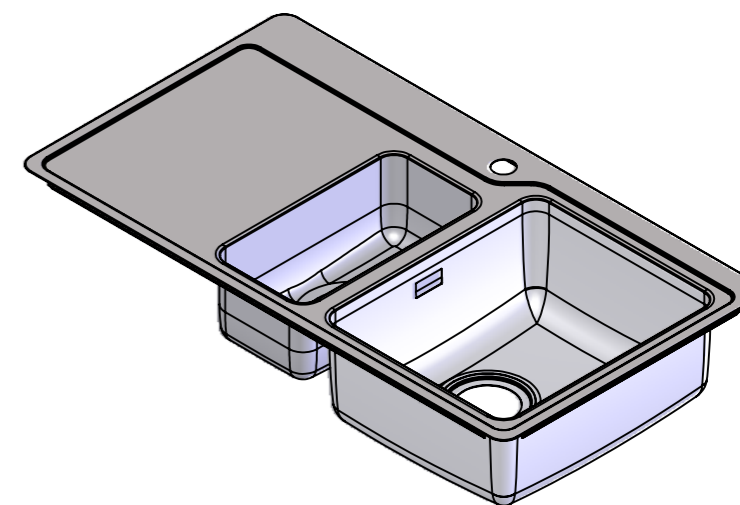
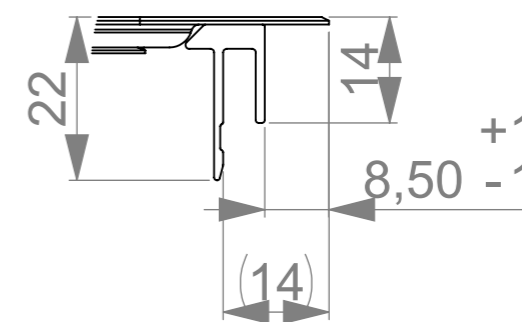
Date
12.06.2020

Designed by
VS

MAIN DIMENSIONS



A (1 : 1)



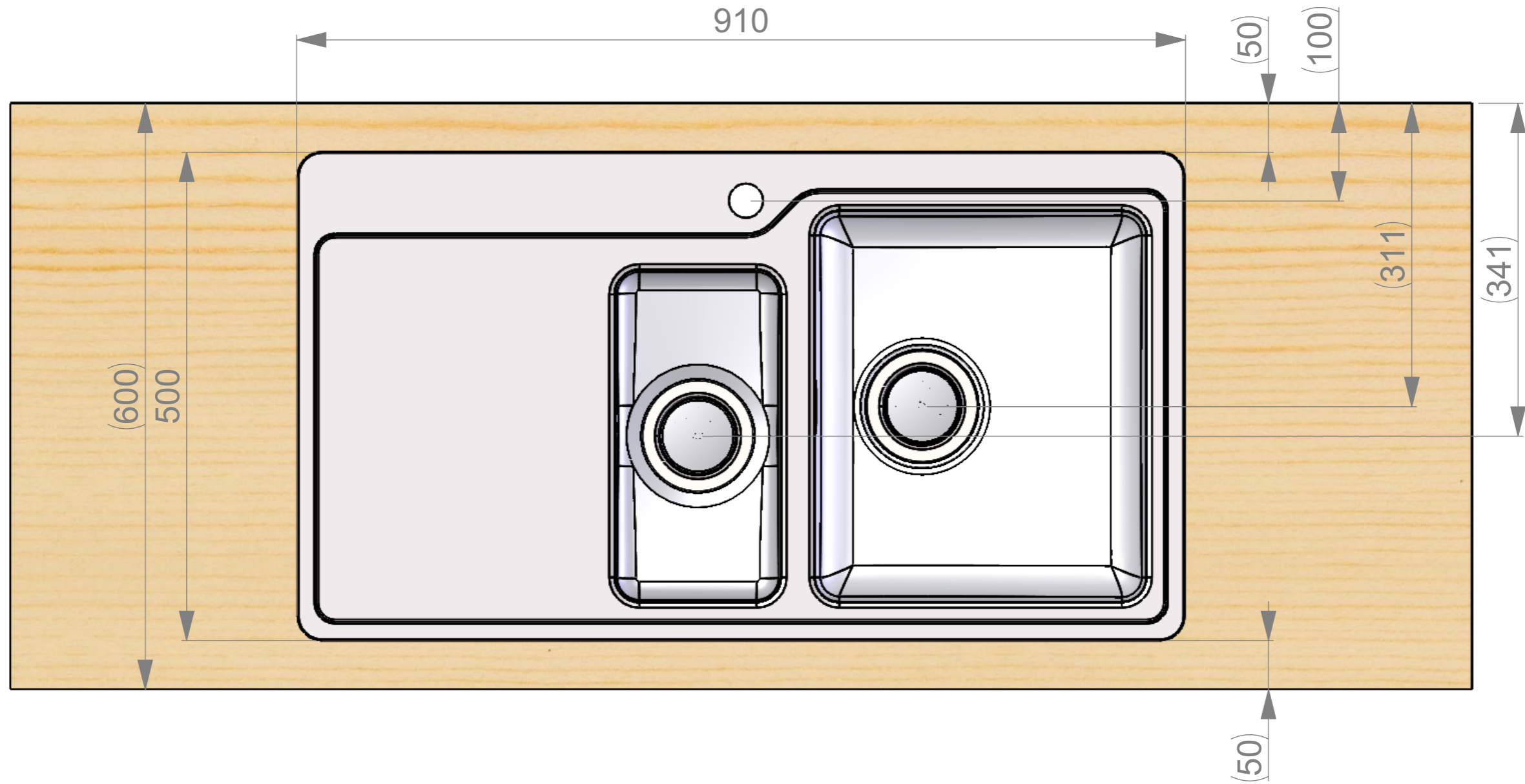
	Mass	28.50 kg	General tolerance	ISO-2768-m	Designed by	TN	Date	15.02.2013
	Size	A3	Scale	1:5	Item	Approved by	Date	
 www.stala.com	Description			N4017-91R	Drawing number	13159	Sheet/sheets	1/6
				Technical Data Sheet			Rev	E

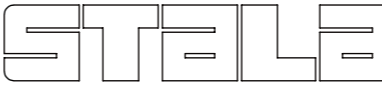
WORKTOP ASSEMBLY

Change description
Siphon updated

Date
12.06.2020

Designed by
VS

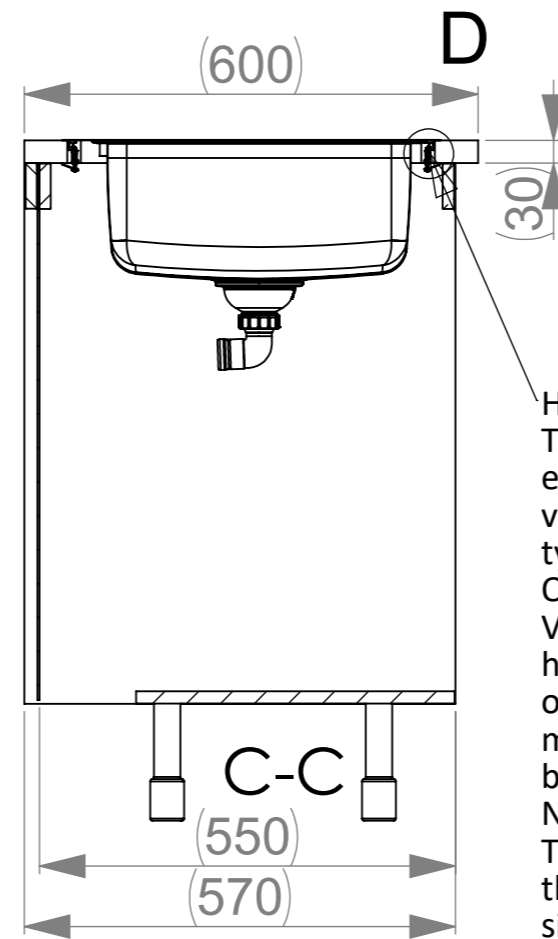
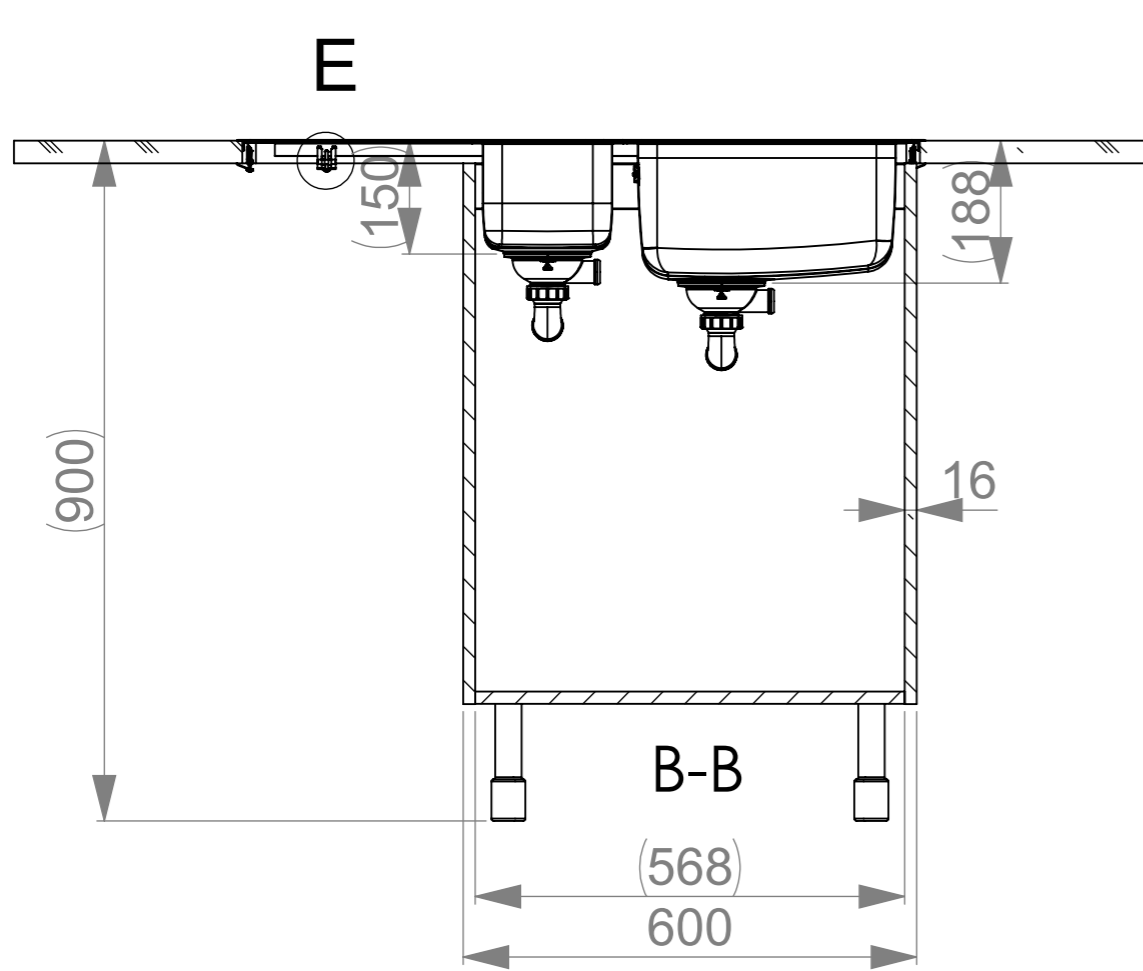


 www.stala.com	Mass 28.50 kg	General tolerance ISO-2768-m	Designed by TN	Date 15.02.2013
	Size A3	Scale 1:5	Item	Approved by
Description N4017-91R Technical Data Sheet			Drawing number 13159	Sheet/sheets 2/6 Rev E

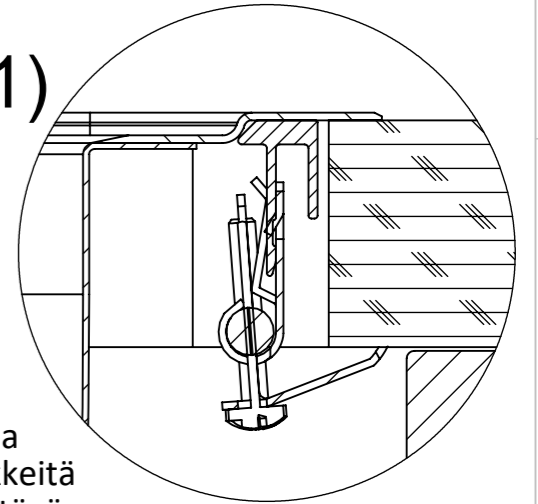
SPACE REQUIREMENTS

Change description
Siphon updated

Date
12.06.2020
Designed by
VS



D (1 : 1)

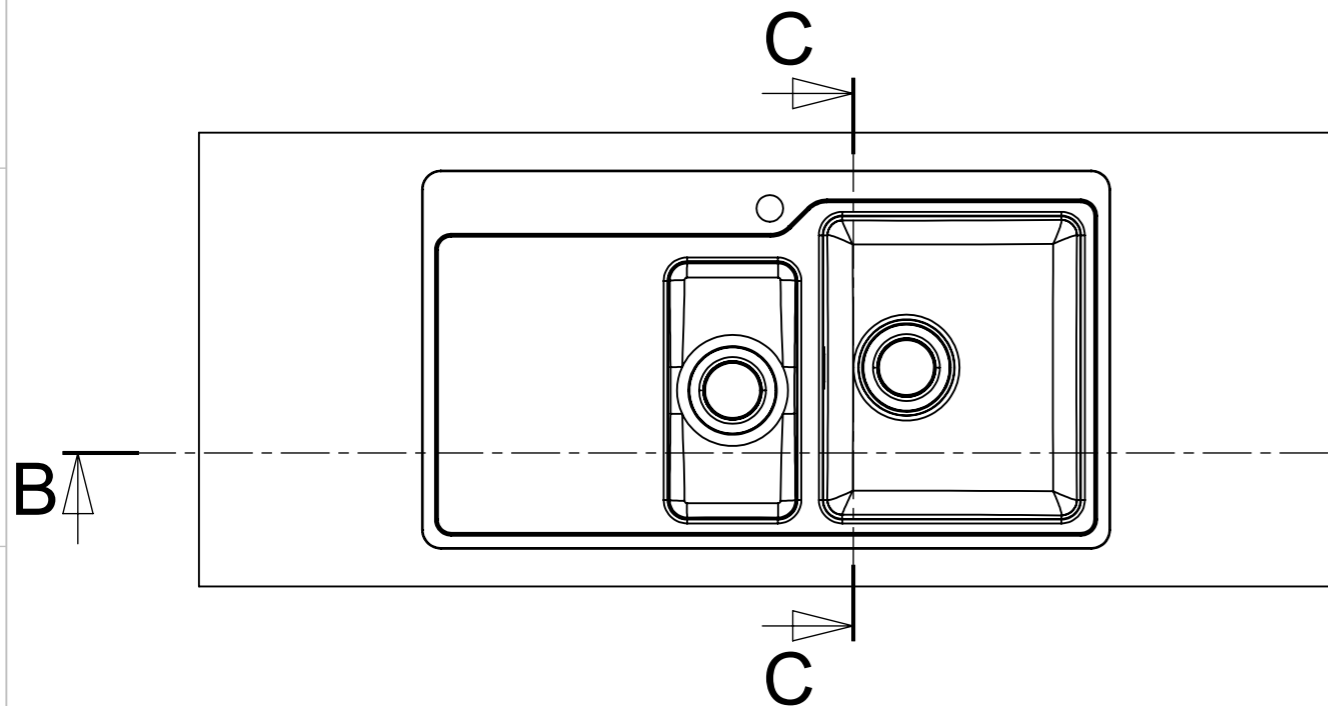
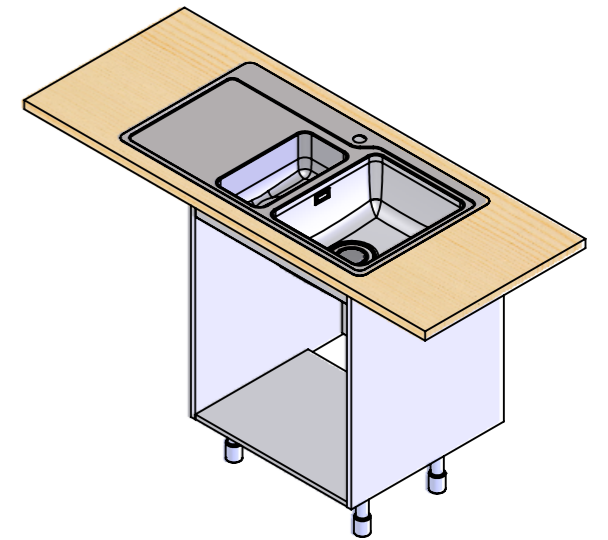
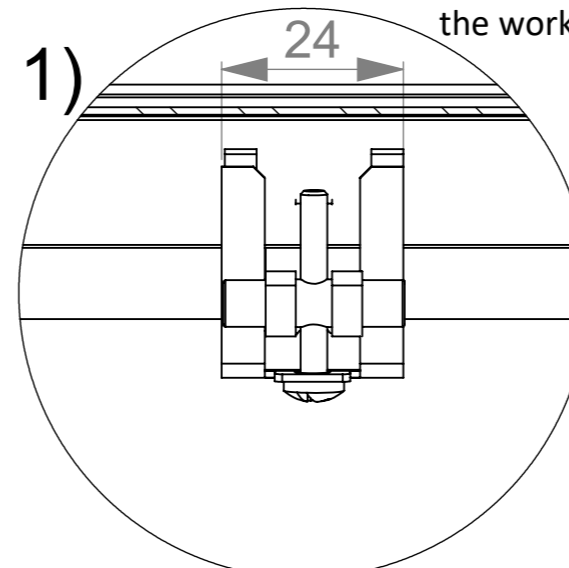


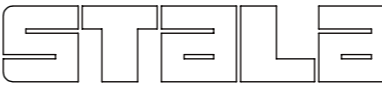
Huom!
Tarvittaessa kaapin väliseinää ja etu/takalistaa lovetettava kiinnikkeitä varten ja pesuallas on kiinnitettävä ennen työtason asennusta.

Obs!
Vid behov måste en inskärning för hofästena göras i skåpets mellanvägg och förbindningslist och diskbänken måste fästas innan du monterar bänkskivan.

Notice!
The partition walls and front/back list of the cupboard must be notched for the sink mountings when needed and the sink must be fastened before installing the worktop.

E (1 : 1)



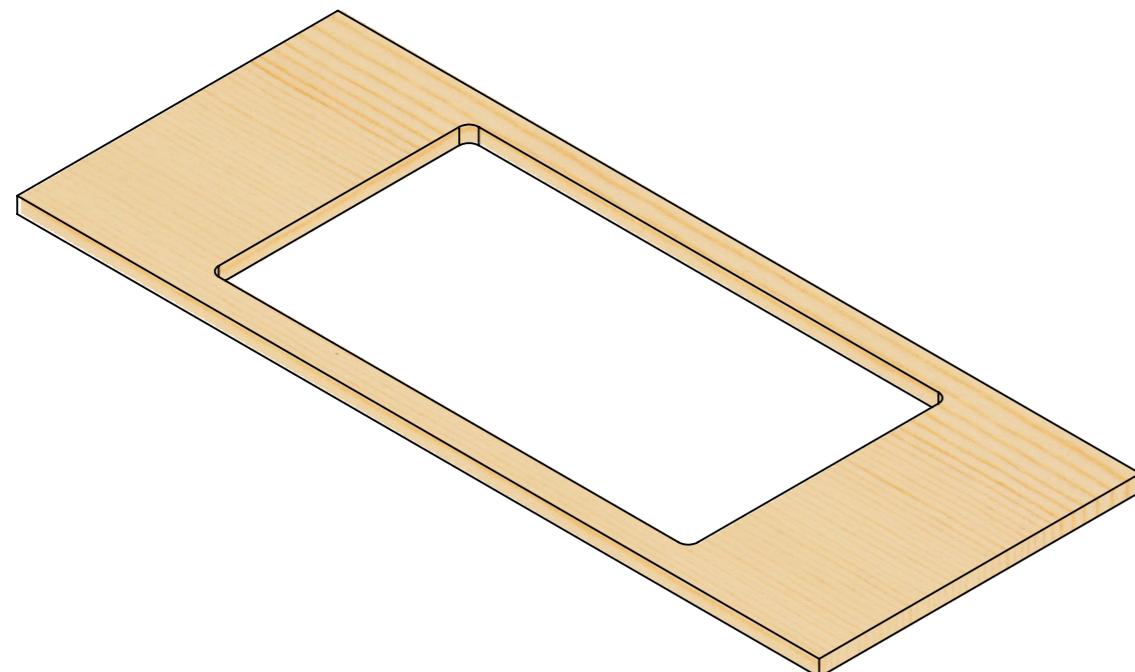
 www.stala.com	Mass 28.50 kg	General tolerance ISO-2768-m	Designed by TN	Date 15.02.2013
	Size A3	Scale 1:10	Item	Approved by
Description N4017-91R Technical Data Sheet			Drawing number 13159	Sheet/sheets 3/6 Rev E

CUT-OUT

Change description
Siphon updated

Date
12.06.2020

Designed by
VS



	Mass	28.50 kg	General tolerance	ISO-2768-m	Designed by	TN	Date	15.02.2013
	Size	A3	Scale	1:5	Approved by		Date	
	Description		N4017-91R		Drawing number		Sheet/sheets	
	www.stala.com		Technical Data Sheet		13159		4/6	
							Rev	E

