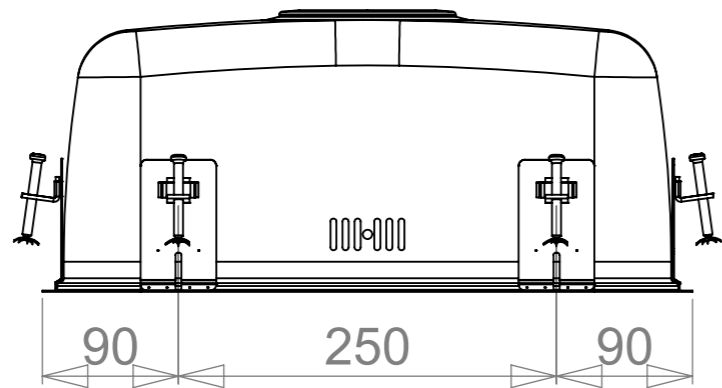
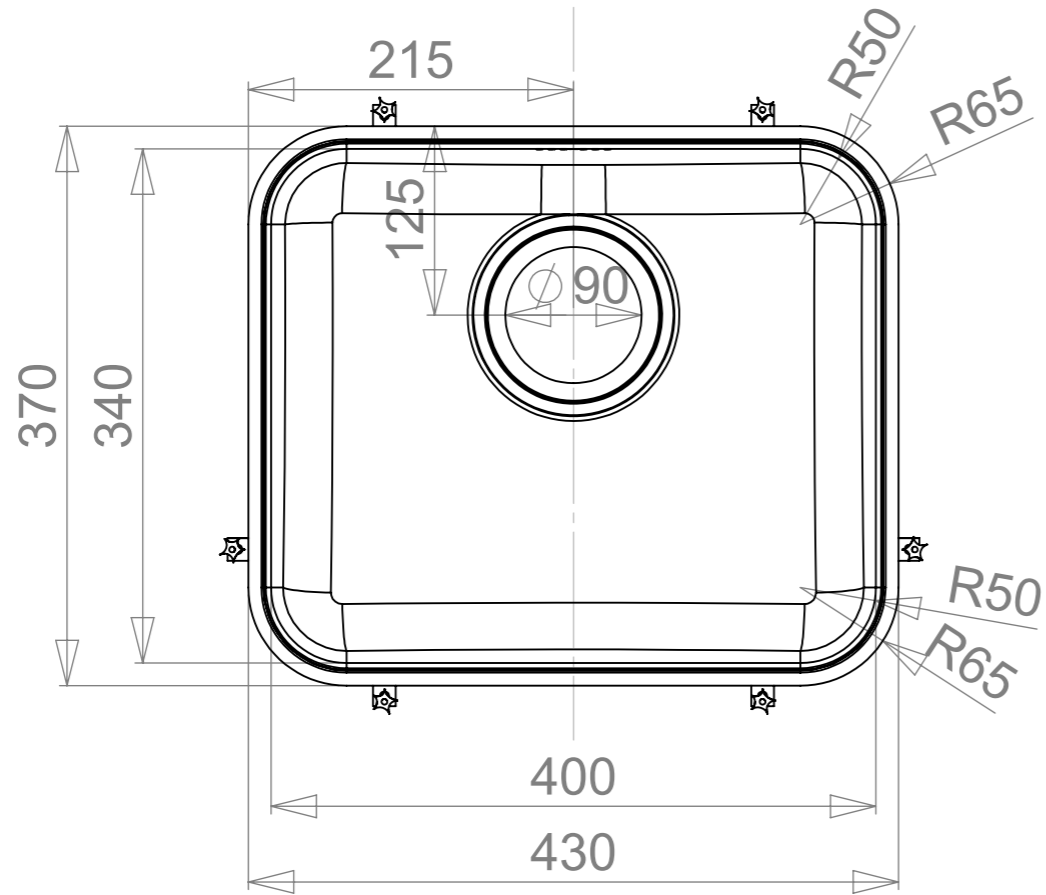
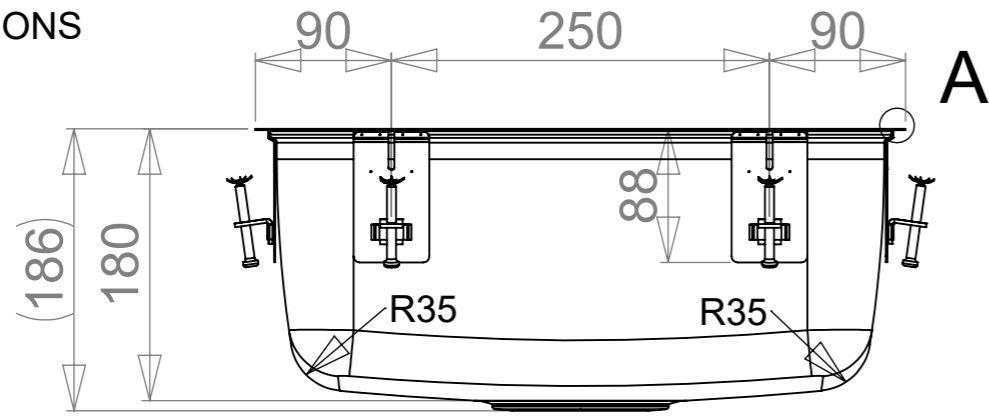
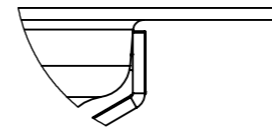


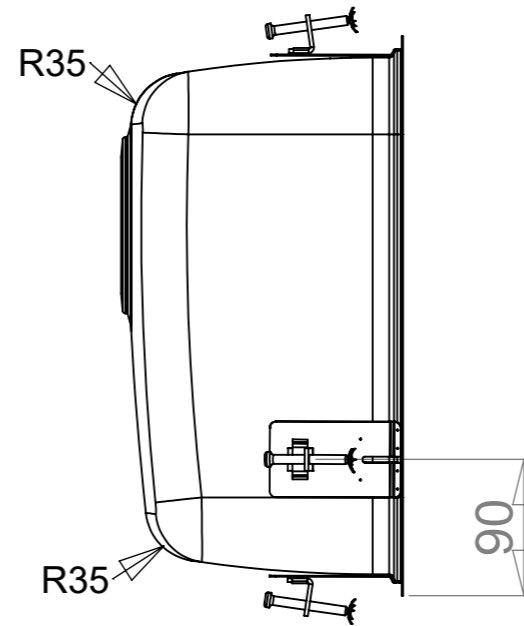
MAIN DIMENSIONS



| REVISION | Muutos | Pvm       | AUTHOR |
|----------|--------|-----------|--------|
| -        |        | 21.3.2019 | viles+ |
| A        |        | 26.3.2019 | viles+ |



A (2 : 1)



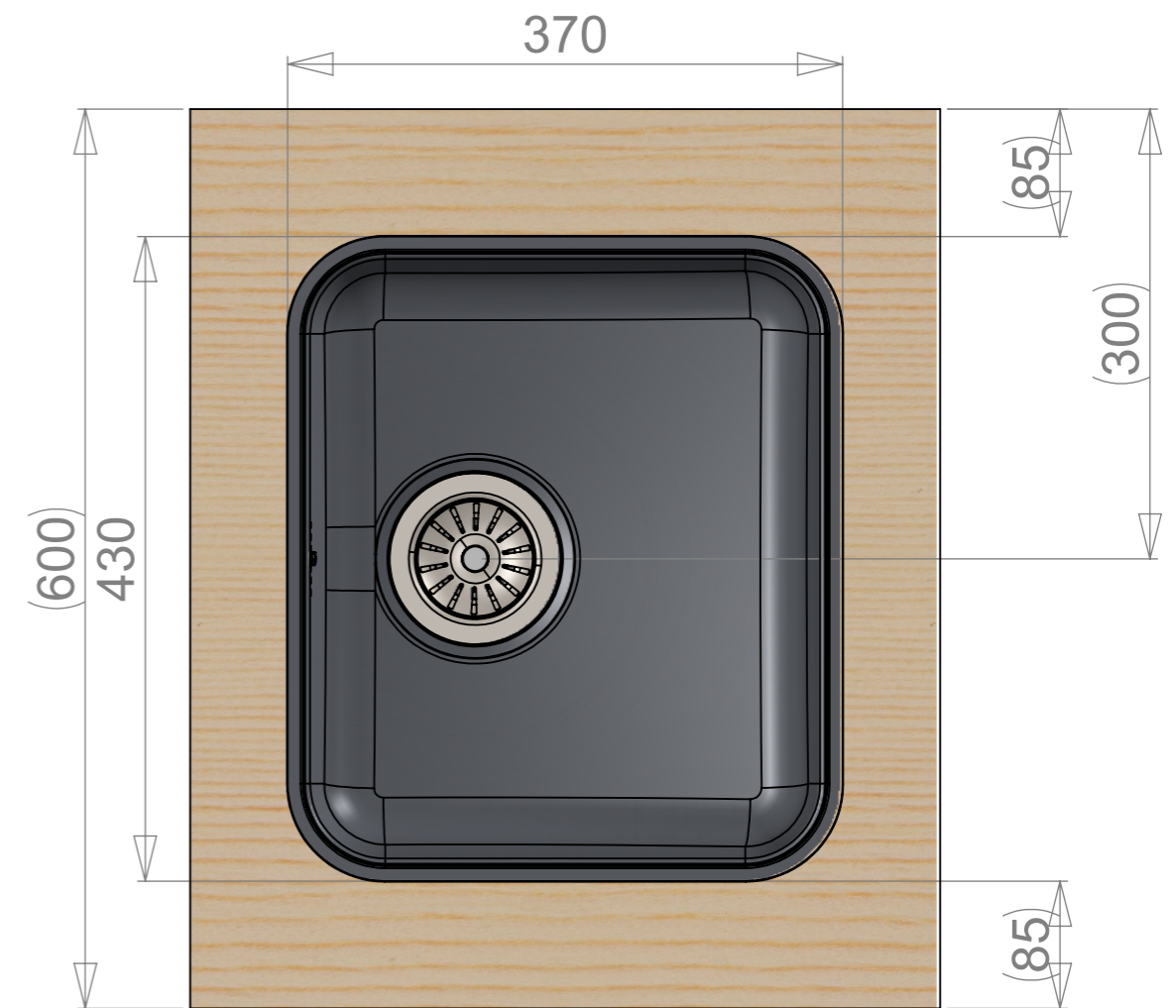
|                   |            |     |                      |                 |            |
|-------------------|------------|-----|----------------------|-----------------|------------|
|                   | Massa      | kg  | Yleistoleranssi      | Suunnittelija   | Pvm        |
|                   | Mittakaava | 1:5 | Nimike               | VS              | 19.03.2019 |
| <br>www.stala.com |            |     | Nimitys              | Tarkastaja      | Pvm        |
|                   |            |     | P-40P                | Piirustusnumero | Sivu       |
|                   |            |     | Technical Data Sheet | 18222           | 1/7        |
|                   |            |     |                      | Rev             | A          |

WORKTOP ASSEMBLY

With 500 mm cabinet

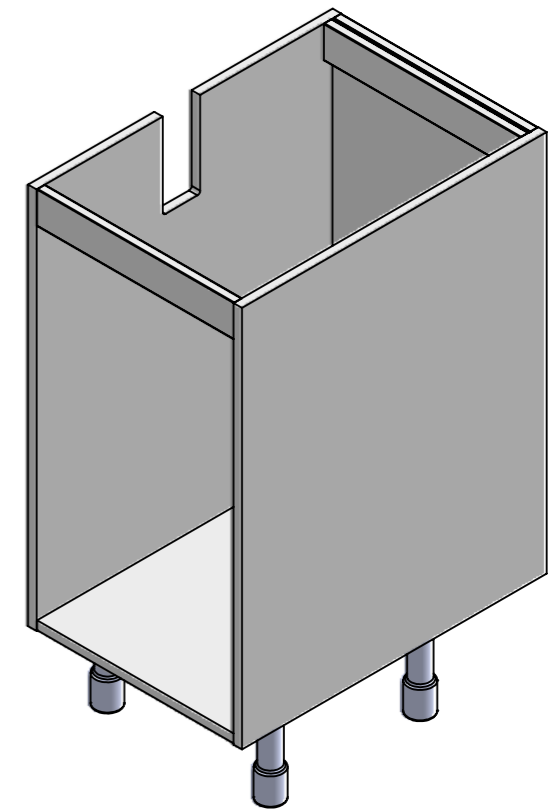
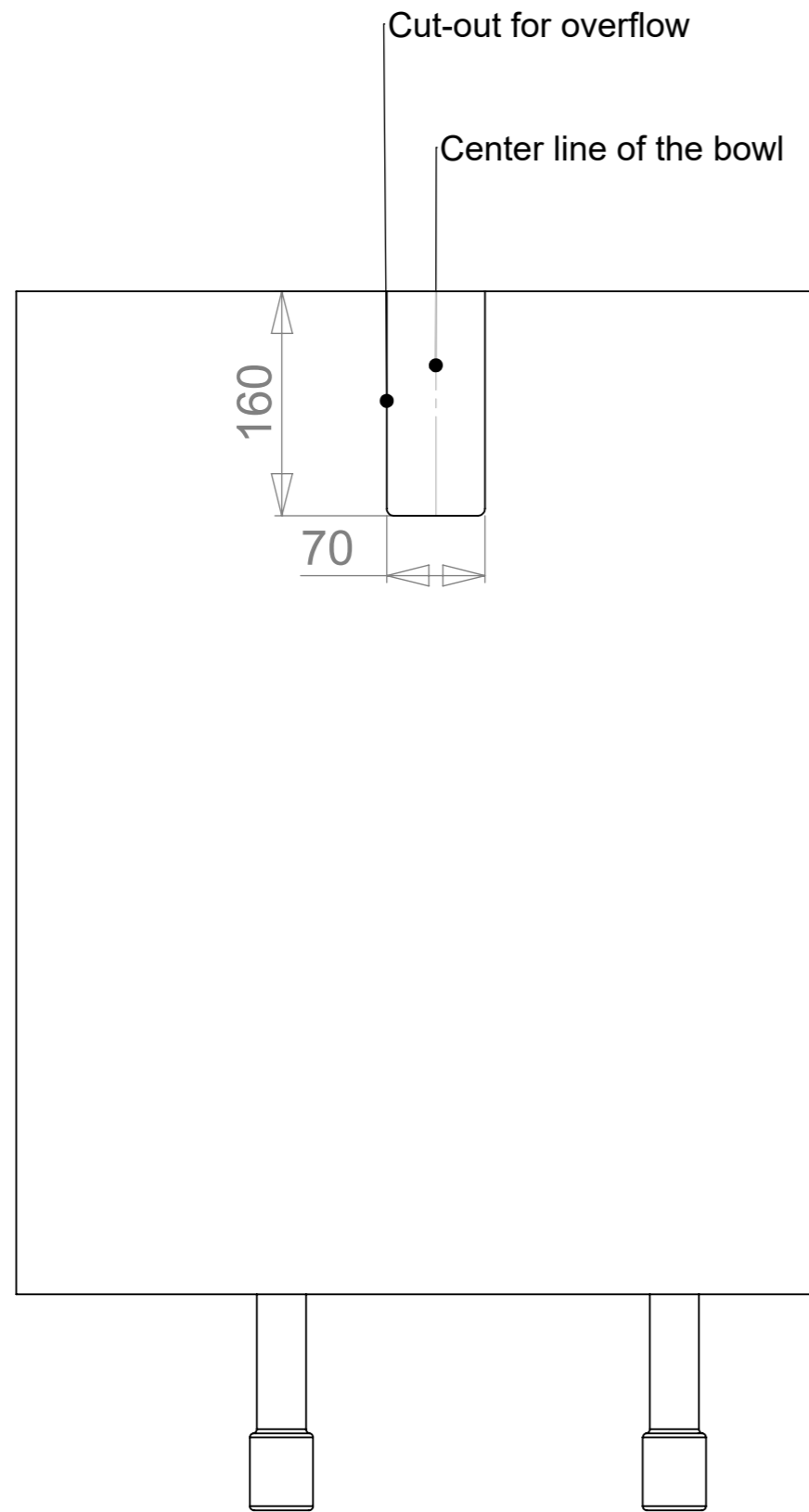


With 400 mm cabinet



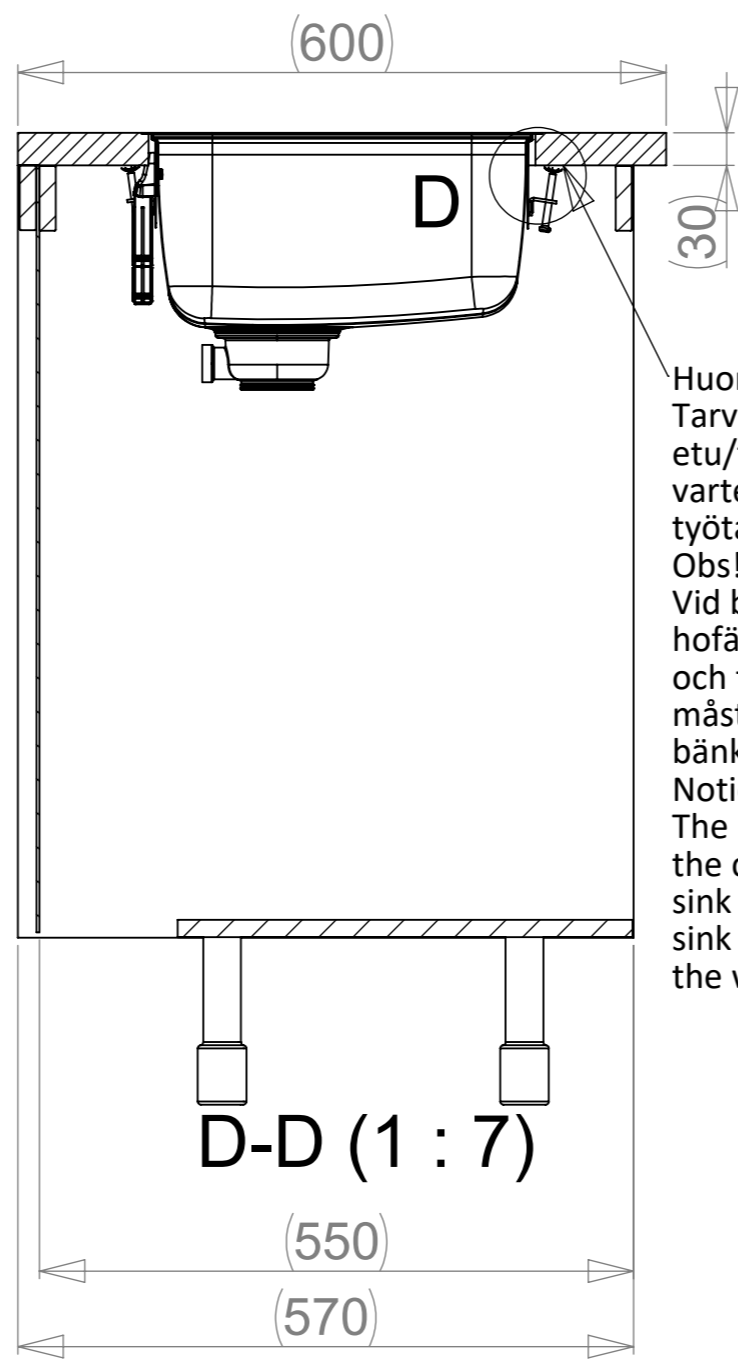
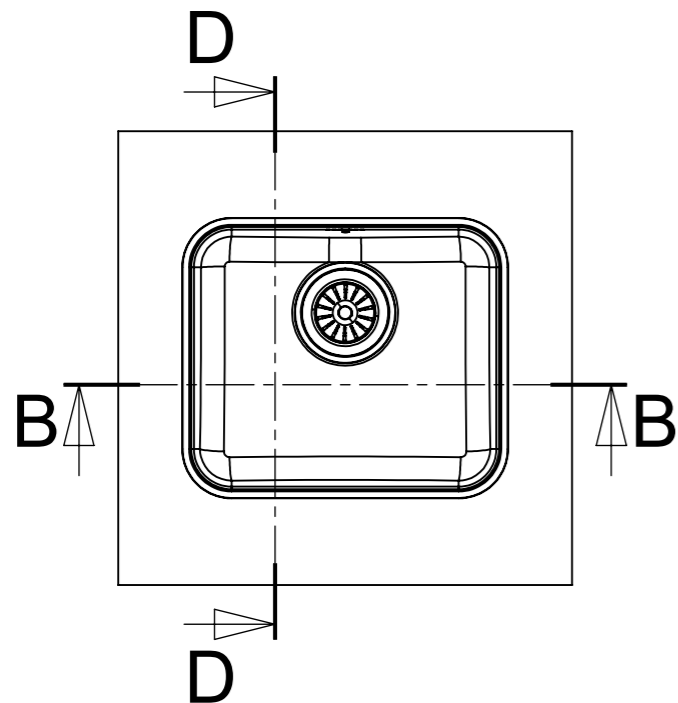
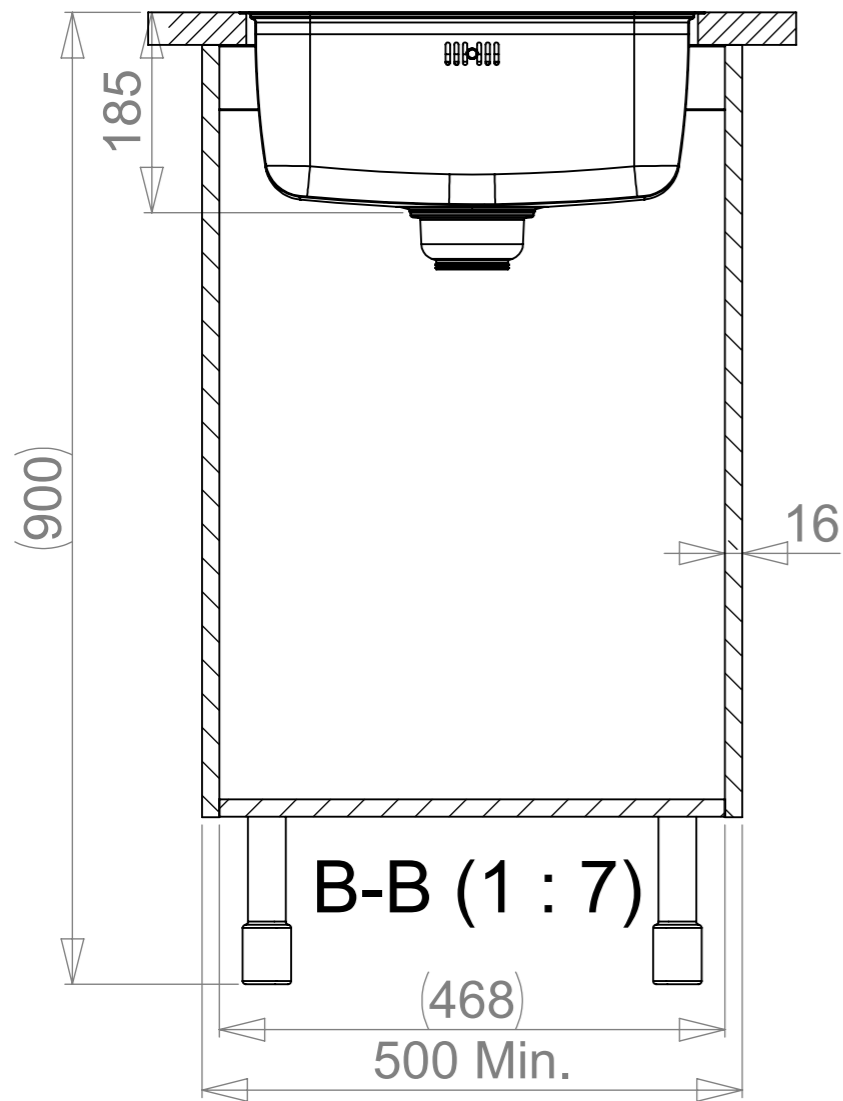
|                   |            |     |                      |                 |            |
|-------------------|------------|-----|----------------------|-----------------|------------|
|                   | Massa      | kg  | Yleistoleranssi      | Suunnittelija   | Pvm        |
|                   | Mittakaava | 1:5 | Nimike               | VS              | 19.03.2019 |
| <br>www.stala.com |            |     | Nimitys              | Tarkastaja      | Pvm        |
|                   |            |     | P-40P                | Piirustusnumero | Sivu       |
|                   |            |     | Technical Data Sheet | 18222           | 2/7        |
|                   |            |     |                      | Rev             | A          |

# CUT-OUTS FOR 400 MM CABINET

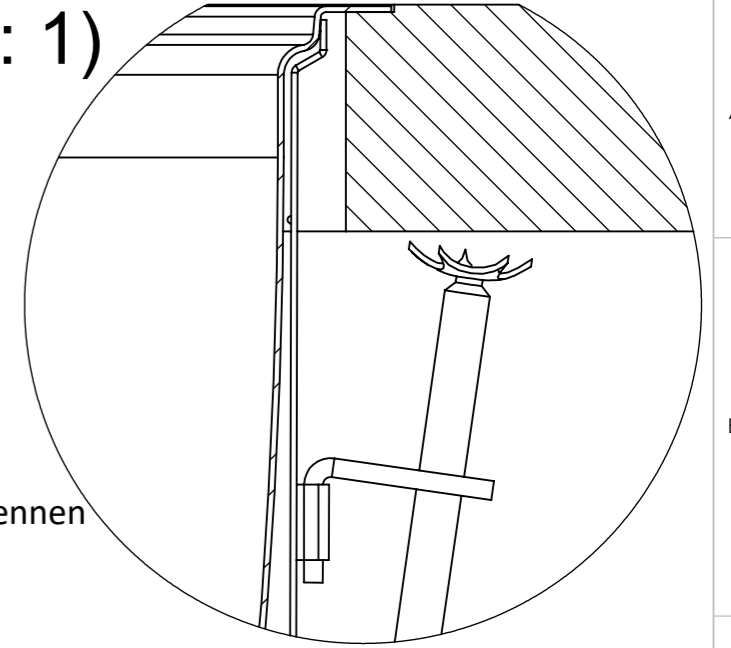


|                   |                      |                 |               |            |
|-------------------|----------------------|-----------------|---------------|------------|
|                   | Massa                | Yleistoleranssi | Suunnittelija | Pvm        |
|                   | kg                   |                 | VS            | 19.03.2019 |
|                   | Mittakaava           | Nimike          | Tarkastaja    | Pvm        |
|                   | A3                   | 1:5             |               |            |
| <br>www.stala.com | Nimitys              | Piirustusnumero | Sivu          |            |
|                   | P-40P                | 18222           | 3/7           |            |
|                   | Technical Data Sheet |                 | Rev           | A          |

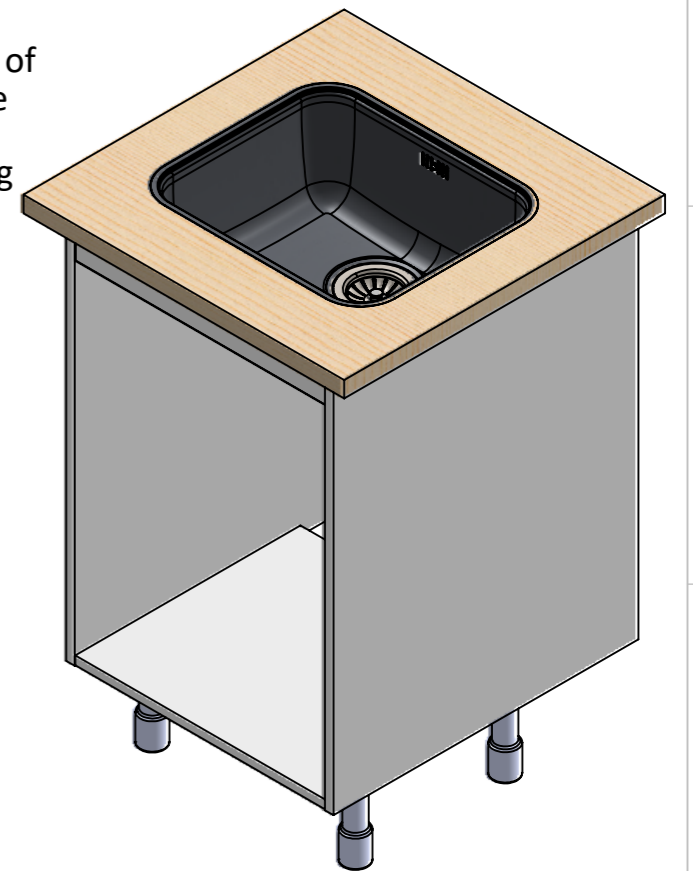
SPACE REQUIREMENTS



D (1 : 1)

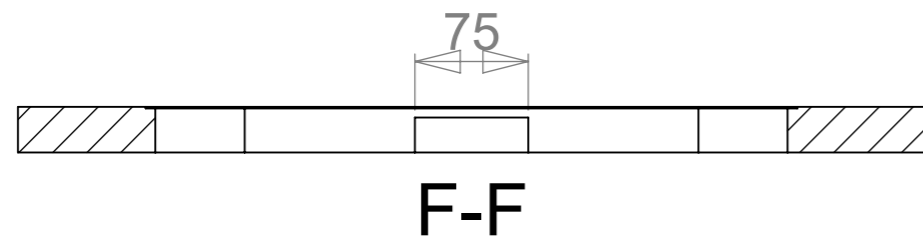
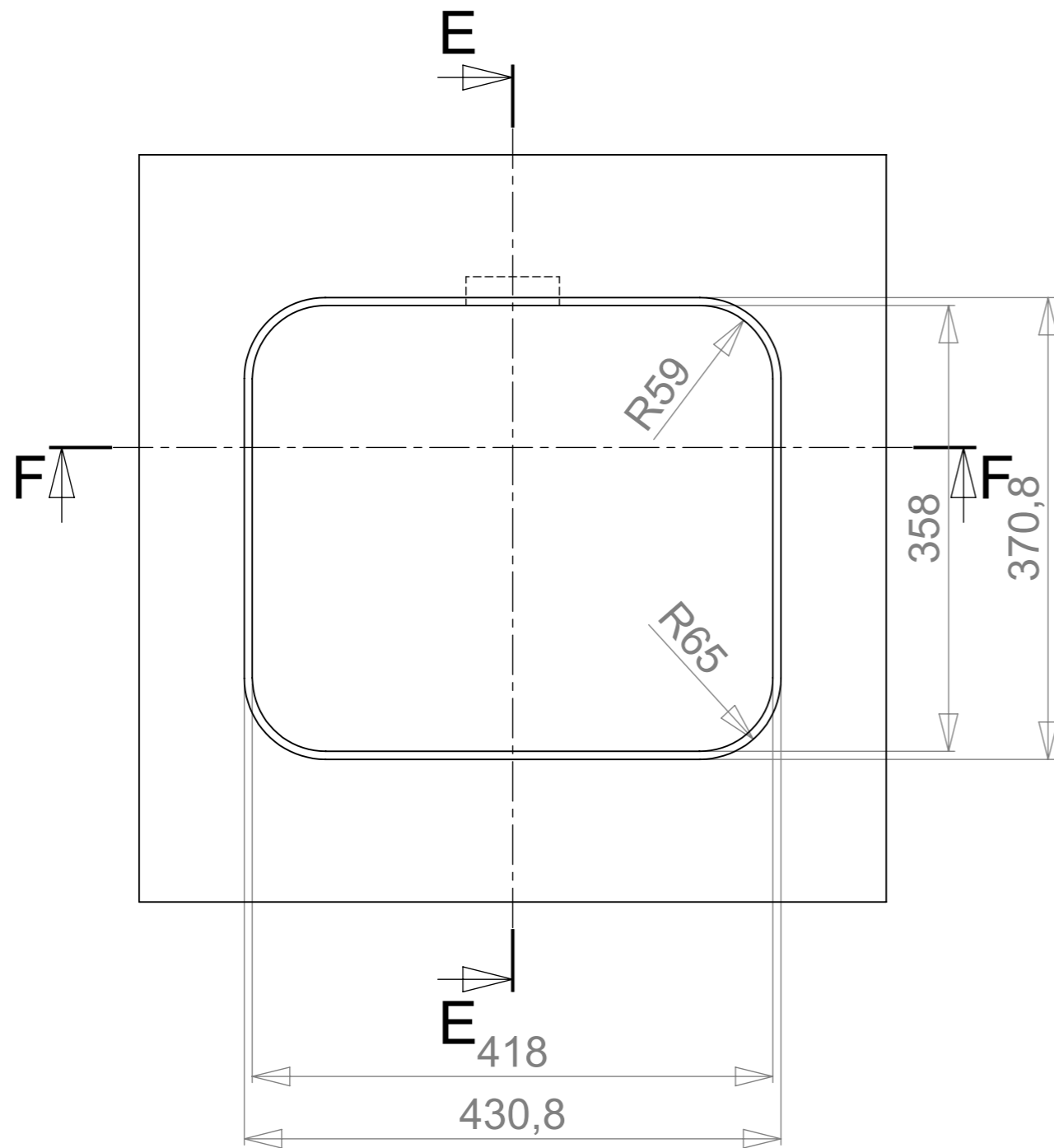


Huom!  
 Tarvittaessa kaapin väliseinää ja etu/takalistaa lovetettava kiinnikkeitä varten ja pesuallas on kiinnitettävä ennen työtason asennusta.  
 Obs!  
 Vid behov måste en inskärning för hofästena göras i skåpets mellanvägg och förbindningslist och diskbänken måste fästas innan du monterar bänkskivan.  
 Notice!  
 The partition walls and front/back list of the cupboard must be notched for the sink mountings when needed and the sink must be fastened before installing the worktop.

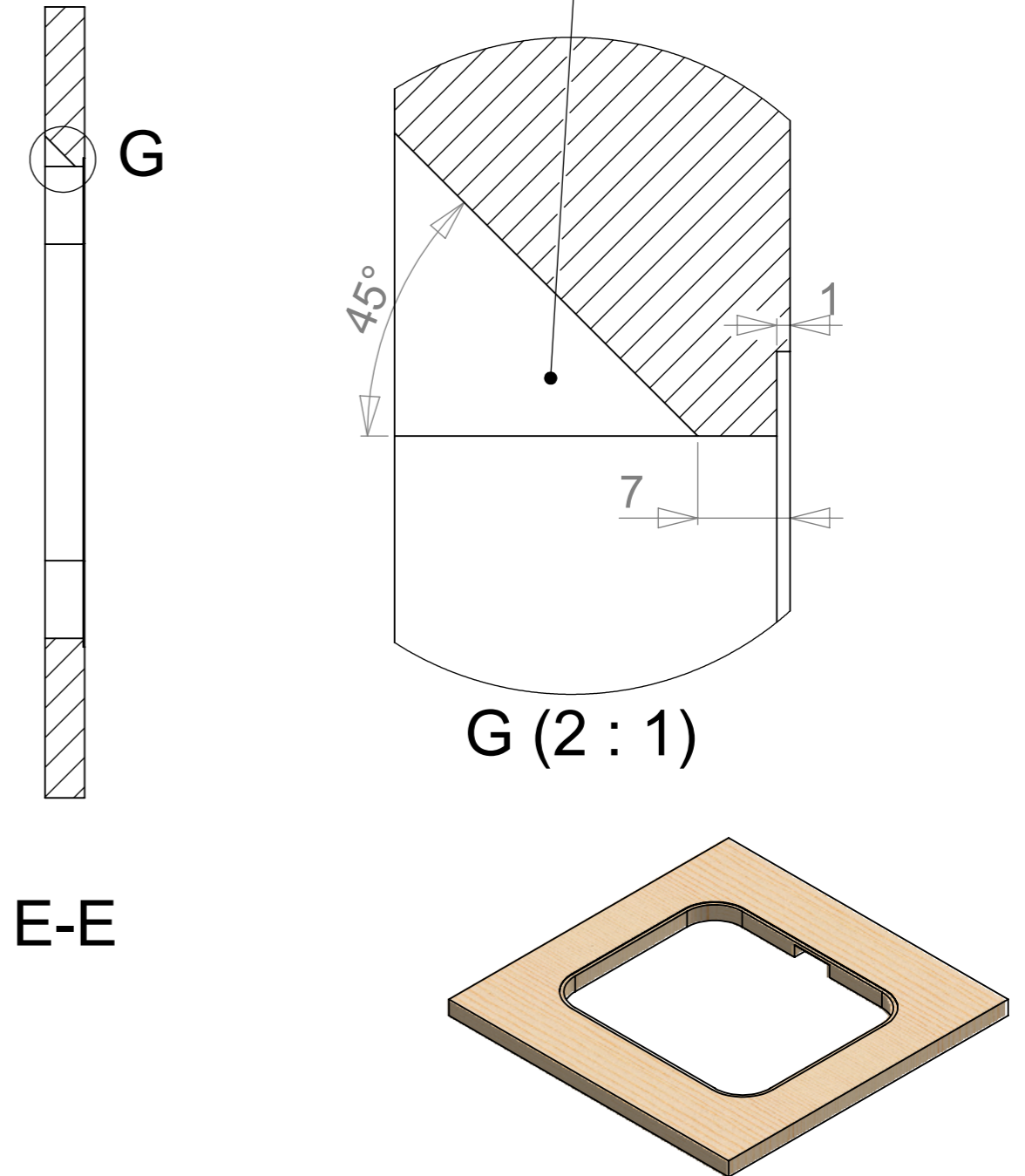



|                   |                       |                          |                     |                   |
|-------------------|-----------------------|--------------------------|---------------------|-------------------|
|                   | Massa<br>kg           | Yleistoleranssi          | Suunnittelija<br>VS | Pvm<br>19.03.2019 |
|                   | Mittakaava<br>A3 1:10 | Nimike                   | Tarkastaja          | Pvm               |
| <br>www.stala.com | Nimitys<br>P-40P      | Piirustusnumero<br>18222 | Sivu<br>4/7         | Rev<br>A          |
|                   | Technical Data Sheet  |                          |                     |                   |

CUT-OUT FOR FLUSH MOUNTING



Cut-out for overflow



|   |                      |                          |                     |                   |
|---|----------------------|--------------------------|---------------------|-------------------|
|  | Massa<br>kg          | Yleistoleranssi          | Suunnittelija<br>VS | Pvm<br>19.03.2019 |
|   | Mittakaava<br>A3 1:5 | Nimike                   | Tarkastaja          | Pvm               |
| www.stala.com   | Nimitys<br>P-40P     | Piirustusnumero<br>18222 | Sivu<br>5/7         | Rev<br>A          |
| Technical Data Sheet  |                      |                          |                     |                   |

