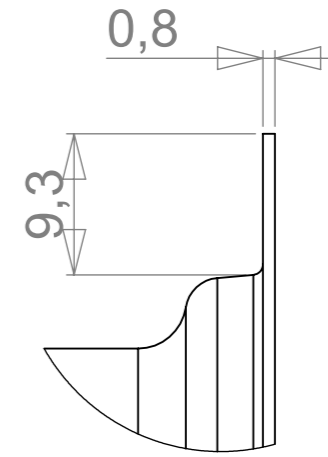
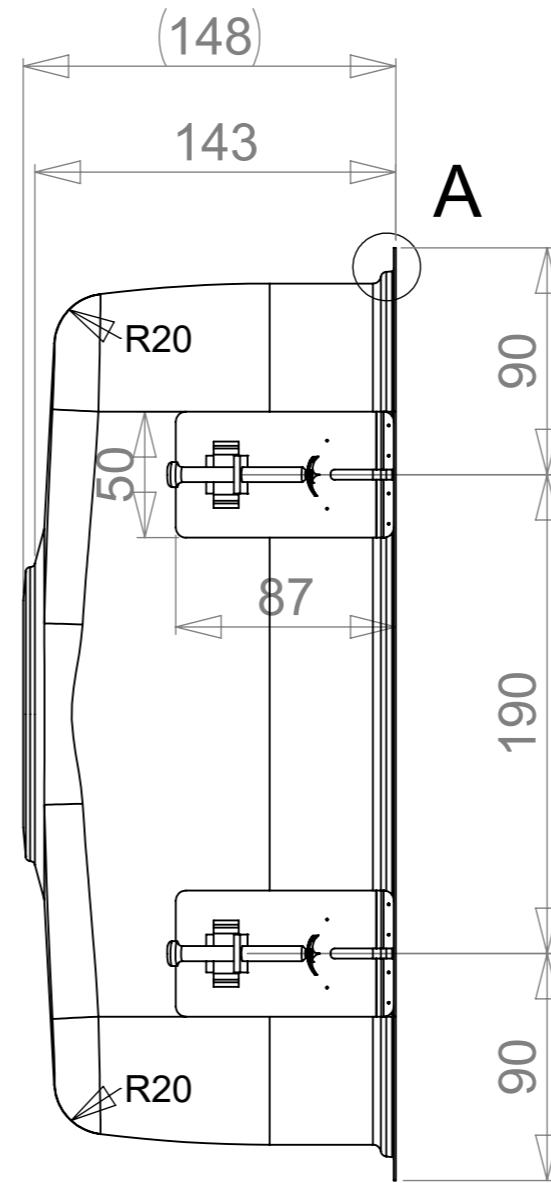
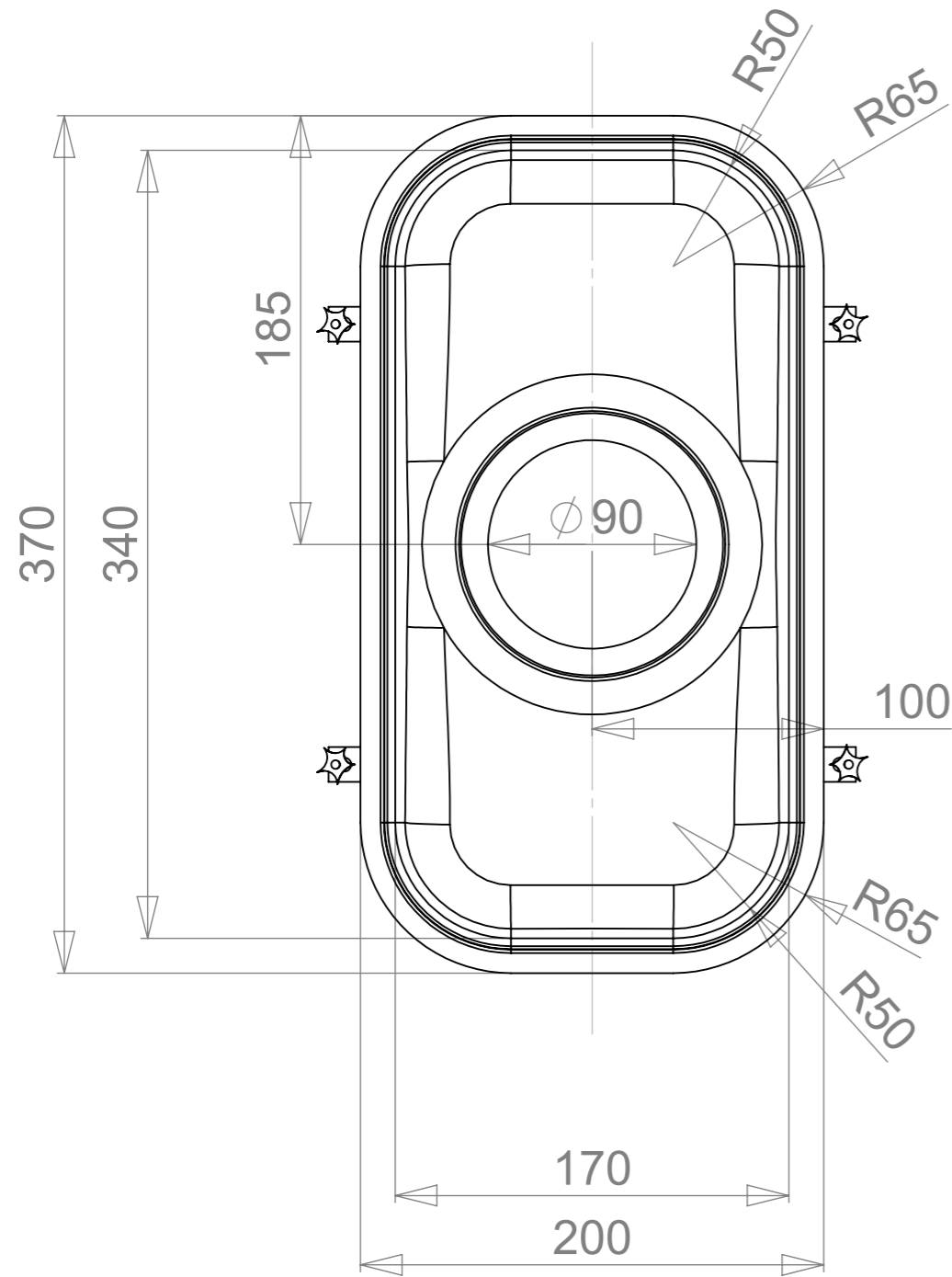
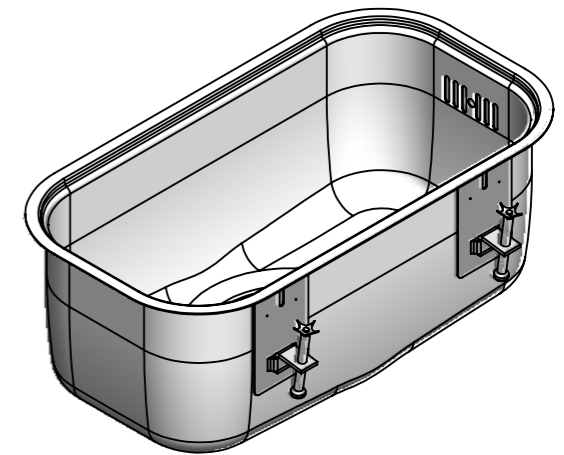



| | | | |
|----------|--------|-----------|---------|
| REVISION | Muutos | Pvm | AUTHOR |
| - | | 25.3.2019 | villes+ |

MAIN DIMENSIONS

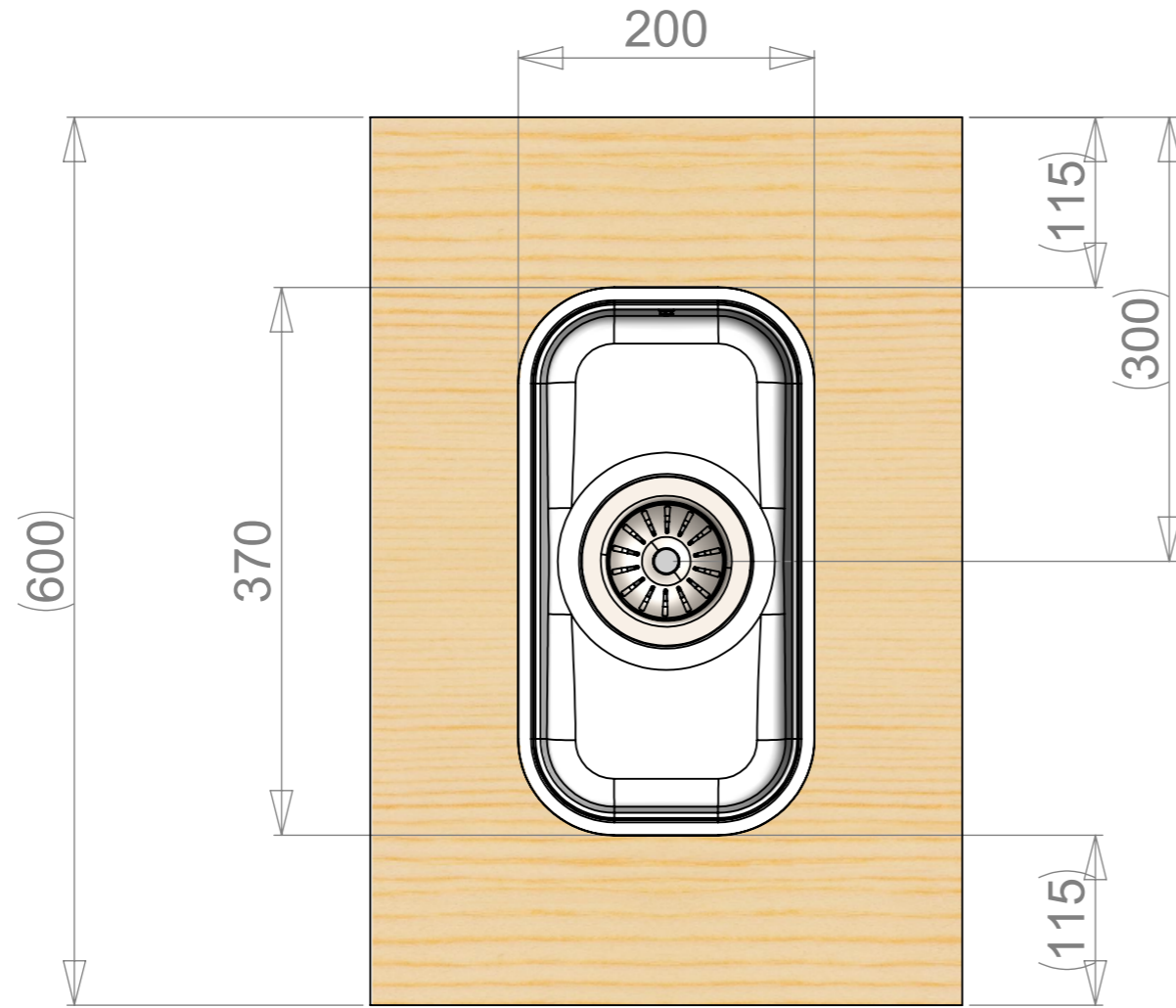




A (2 : 1)



| | | | | |
|--|----------------------|--------------------------|---------------------|-------------------|
|  www.stala.com | Massa kg | Yleistoleranssi | Suunnittelija VS | Pvm 22.03.2019 |
| | Mittakaava A3 1:3 | Nimike | Tarkastaja | Pvm |
| | Nimitys P-17P | Piirustusnumero 18229 | Sivu 1/6 | Rev - |
| Technical Data Sheet | | | | |

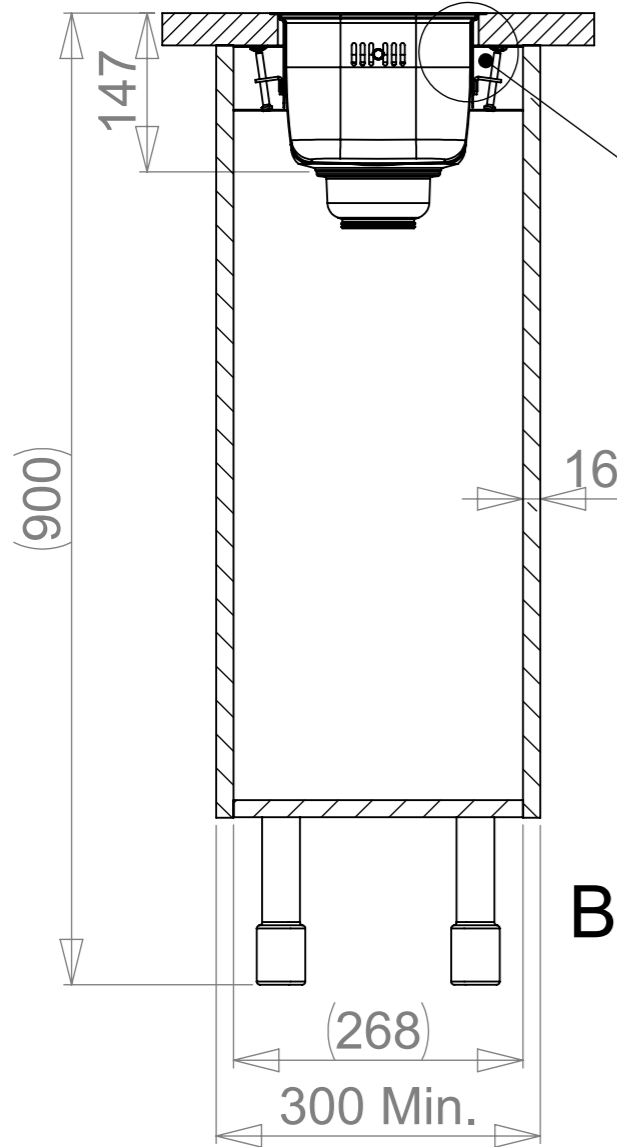
WORKTOP ASSEMBLY



| | | | | |
|---|-------------------------------|-----------------|---------------|------------|
|  | Massa | Yleistoleranssi | Suunnittelija | Pvm |
| | kg | | VS | 22.03.2019 |
| | Mittakaava | Nimike | Tarkastaja | Pvm |
| | A3 1:5 | | | |
|  www.stala.com | Nimitys | Piirustusnumero | Sivu | |
| | P-17P Technical Data Sheet | 18229 | 2/6 | |
| | | | Rev | - |

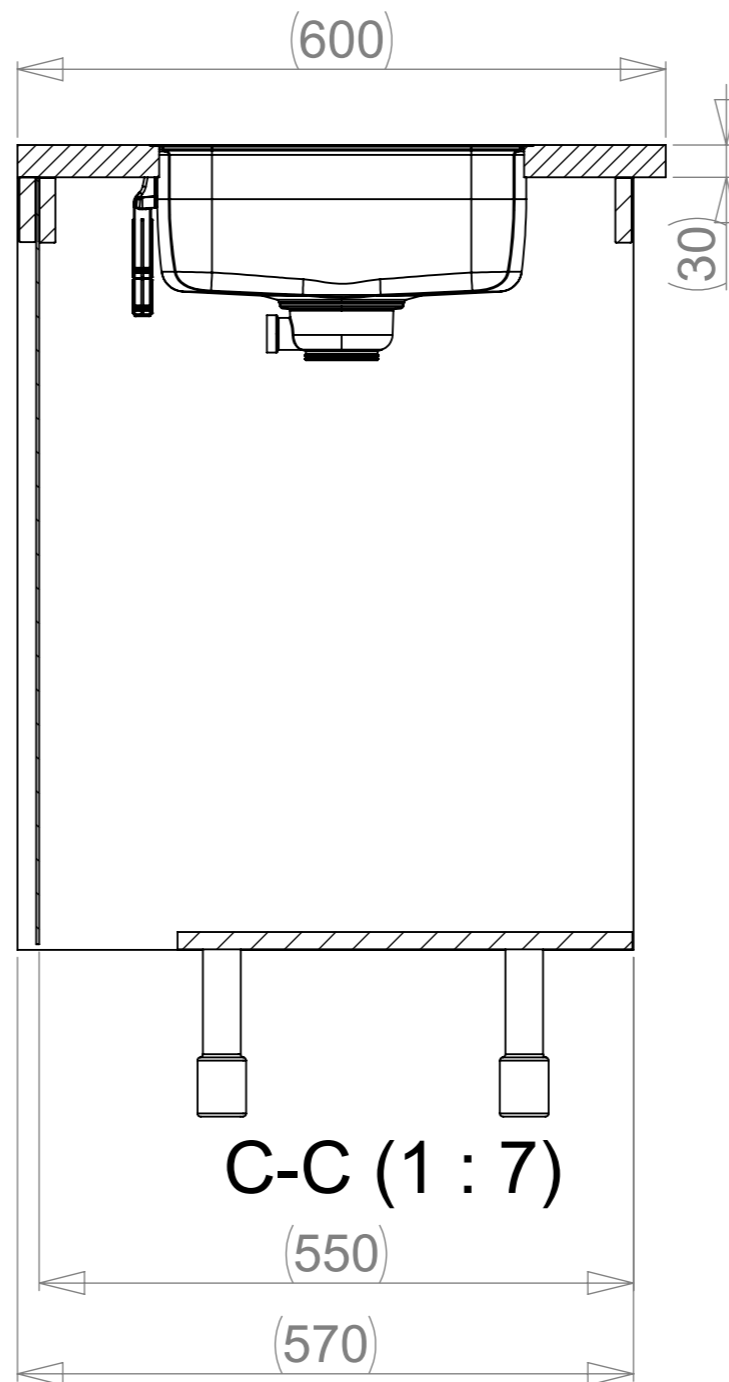
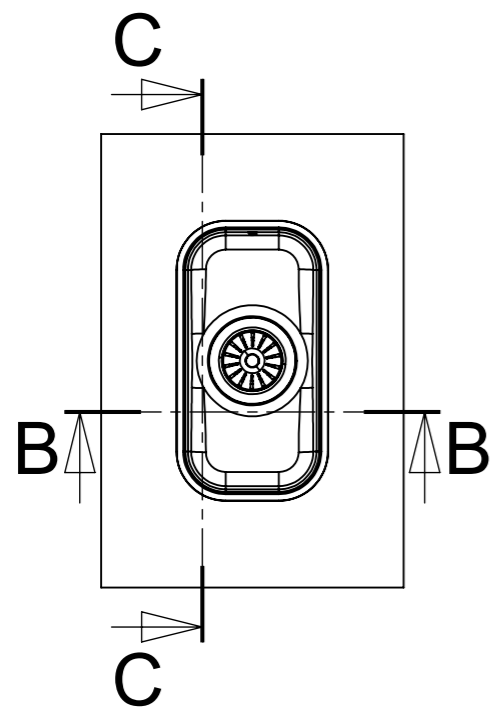
SPACE REQUIREMENTS

D

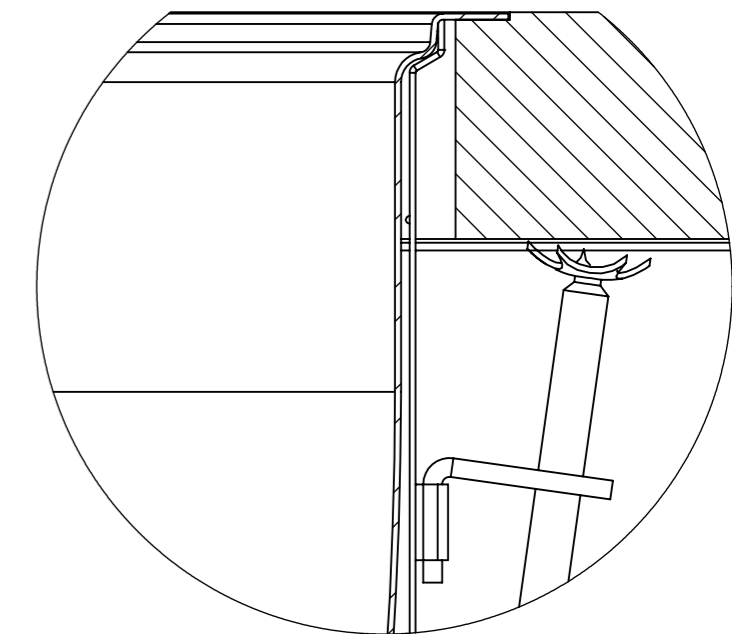


Huom!
 Tarvittaessa kaapin väliseinää ja etu/takalistaa lovetettava kiinnikkeitä varten ja pesuallas on kiinnitettävä ennen työtason asennusta.
 Obs!
 Vid behov måste en inskärning för hofästena göras i skåpets mellanvägg och förbindningslist och diskbänken måste fästas innan du monterar bänkskivan.
 Notice!
 The partition walls and front/back list of the cupboard must be notched for the sink mountings when needed and the sink must be fastened before installing the worktop.

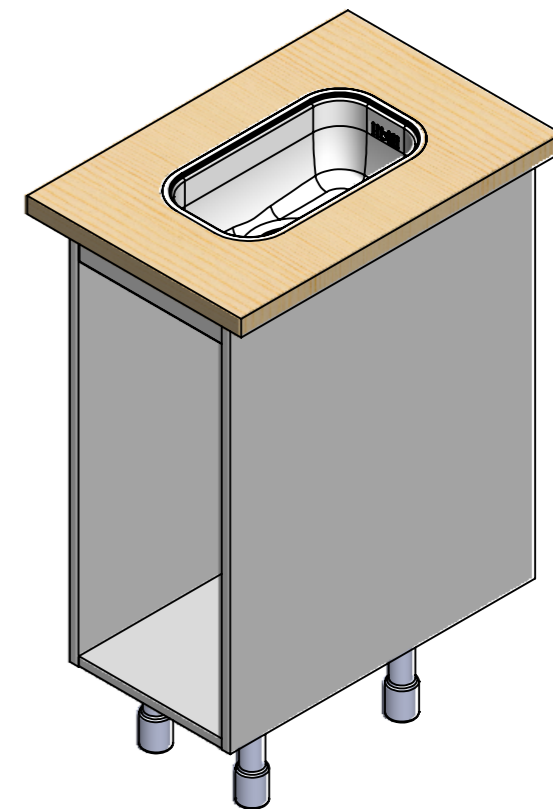
B-B (1 : 7)





C-C (1 : 7)

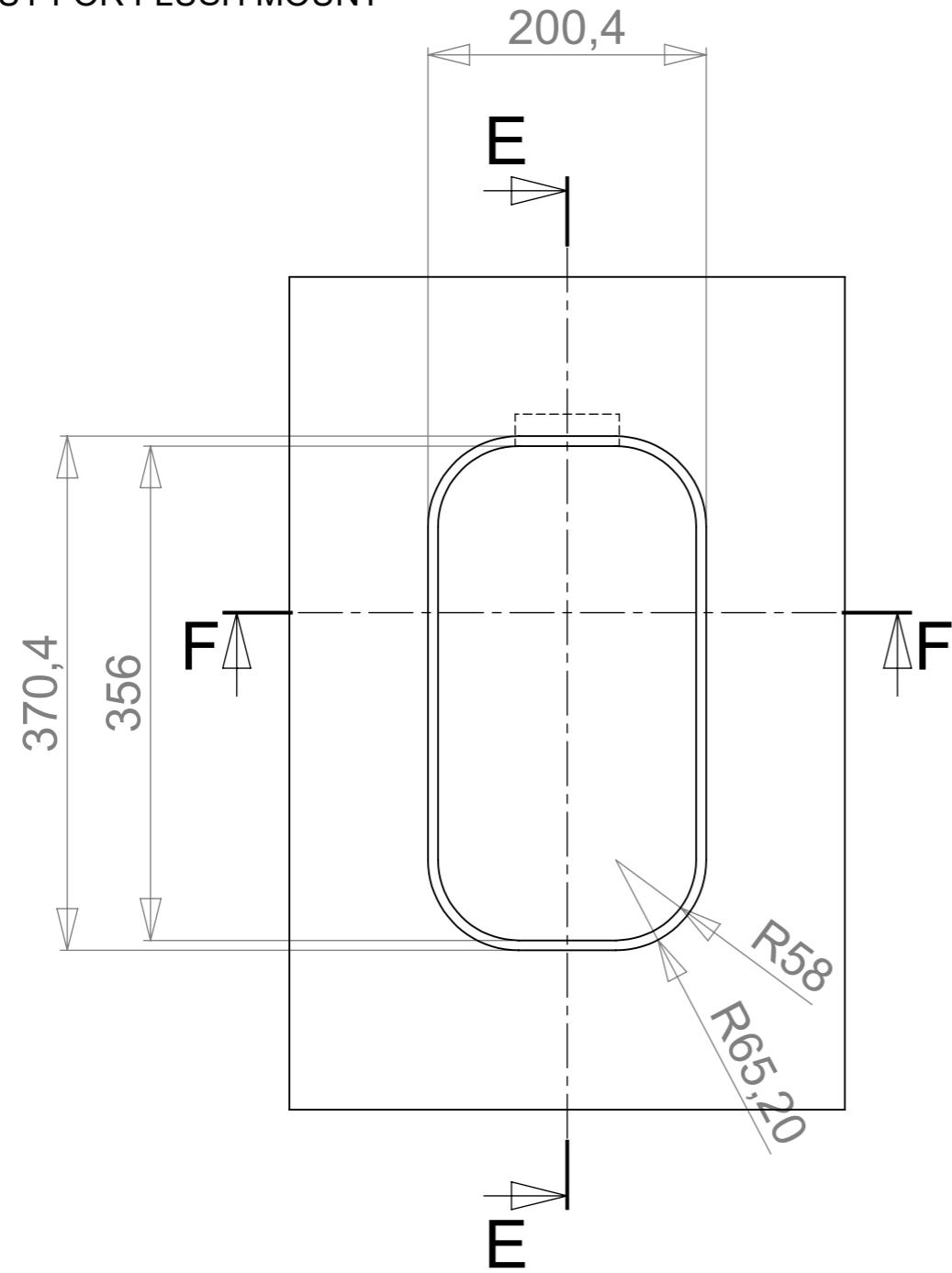


D (1 : 1)

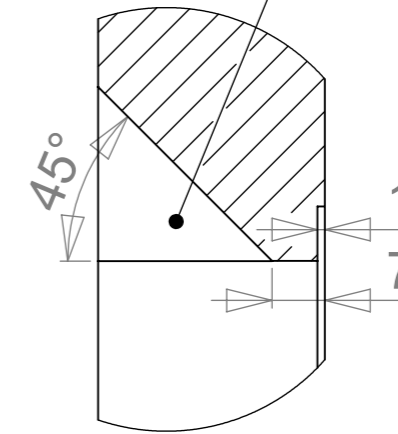


| | | | | |
|---|----------------------|--------------------------|---------------------|-------------------|
|  | Massa kg | Yleistoleranssi | Suunnittelija VS | Pvm 22.03.2019 |
| | Mittakaava A3 1:5 | Nimike | Tarkastaja | Pvm |
|  www.stala.com | Nimitys P-17P | Piirustusnumero 18229 | Sivu 3/6 | Rev - |
| | Technical Data Sheet | | | |

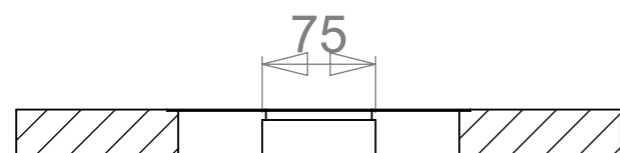
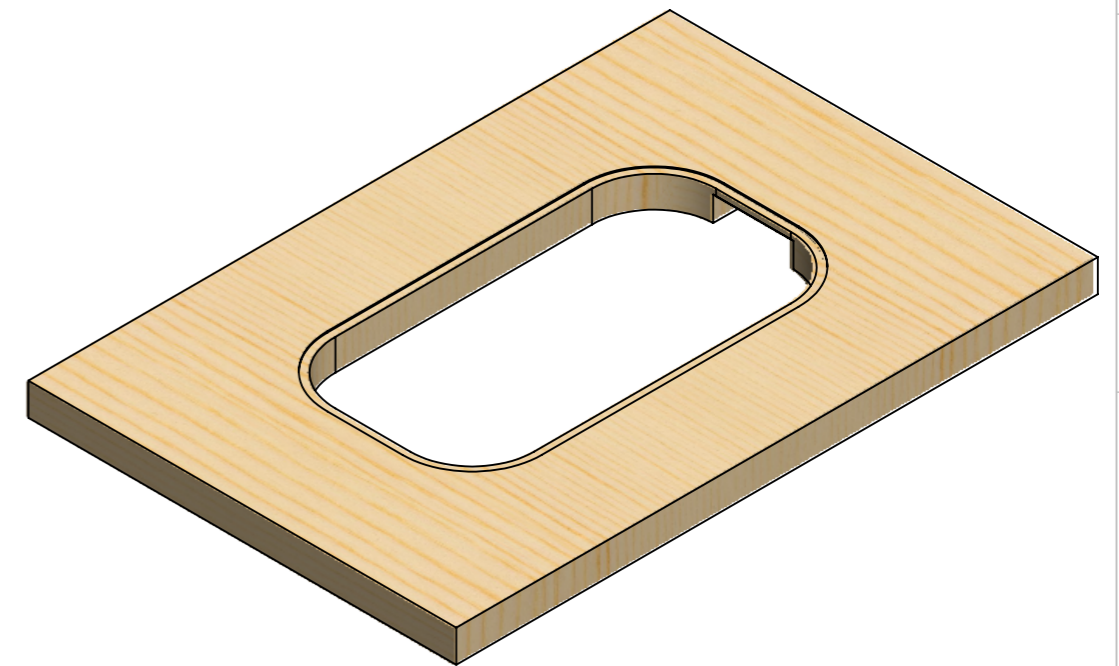
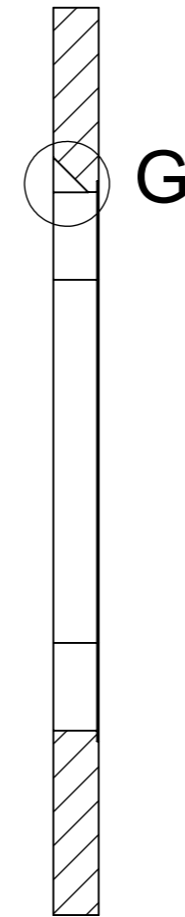
CUT OUT FOR FLUSH MOUNT





Cut out for overflow



G (1 : 1)



| | | | | | |
|---|------------|-----|----------------------|-----------------|------------|
|  | Massa | kg | Yleistoleranssi | Suunnittelija | Pvm |
| | Mittakaava | 1:5 | Nimike | VS | 22.03.2019 |
|  www.stala.com | | | Nimitys | Tarkastaja | Pvm |
| | | | P-17P | Piirustusnumero | Sivu |
| | | | Technical Data Sheet | 18229 | 4/6 |
| | | | | Rev | - |

